

Project Site Eligibility Assessment

Overview

The Project Site Eligibility Assessment is a rapid, satellite-based analysis that **evaluates whether a site meets the criteria for Afforestation, Reforestation, and Revegetation (ARR) carbon projects**. Using historical land-use and woody vegetation cover data, this assessment provides clear insights into **site feasibility** and compliance with leading methodologies including **Verra's VM0047**.

Key Benefits

- ✓ **Accelerate Feasibility Assessments:** Quickly determine project viability and streamline Project Design Document (PDD) preparation.
- ✓ **Regulatory Compliance:** Ensure alignment with evolving methodologies and evolving carbon standards.
- ✓ **Data-Driven Decision Making:** Access detailed spatial insights to inform project planning.

What You Get

Your results are delivered via Sherwood, our project developer hub, ensuring seamless access to critical project data:

- **Eligibility Metrics** – Percentage and area of eligible land.
- **Geospatial Maps** – Downloadable polygons of suitable project areas.
- **Methodology Report** – Detailed description of data sources and assessment criteria.

How to Request an Assessment

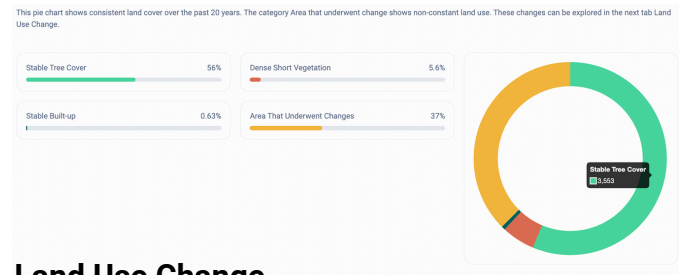
- 1. Prepare Your Site Data** – Submit a digital boundary file in geojson, .kml, .kmz, or ESRI shapefile format.
- 2. Submit Your Request** – If you have a Sherwood account, request the assessment directly through the platform. Otherwise, you will need to create an account.
- 3. Receive a Quote** – A custom quote will be provided before proceeding.
- 4. Access Your Results** – Once completed, your results will be available on Sherwood.

Sample Maps & Graphs of the Assessment

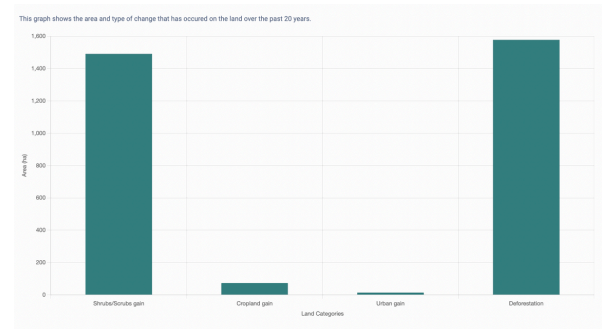
Eligible Areas



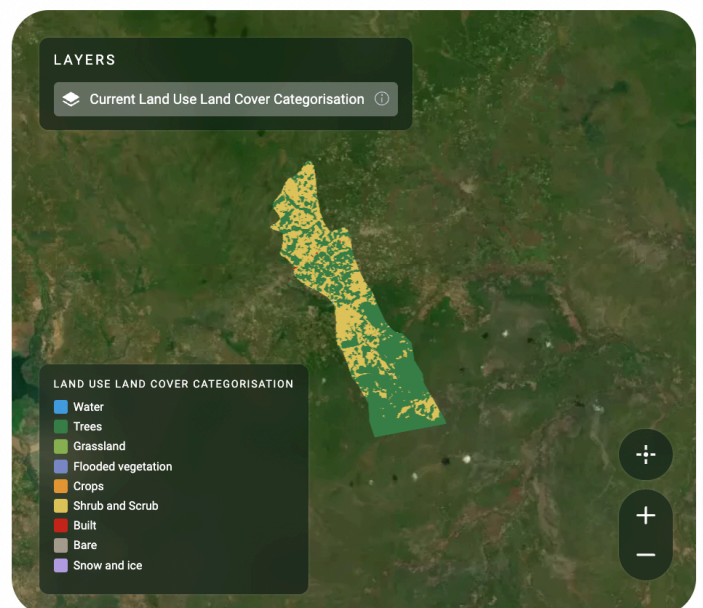
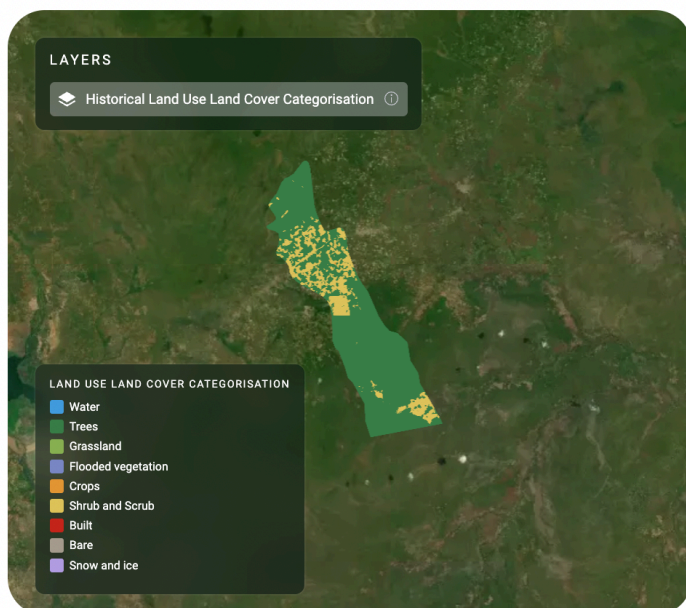
Land Use Stability



Land Use Change



Land Use Land Cover Change (LULC)





Smarter Assessments. Stronger Projects.

Every project has different needs—that's why we offer a **suite of assessments** designed to support you at every stage. From feasibility to impact verification, our AI-powered monitoring delivers **precise, science-backed insights** to help you make better decisions and accelerate your project development timelines.

But we don't stop there— our expertise extends beyond assessments.

We also offer services to help you secure **early-stage funding, optimise carbon credit revenues**, and communicate your project's impact with tangible data and visuals.

Want to learn more? Get in touch to explore the full range of assessments and services we offer.

Frequently Asked Questions

What standards does this assessment align with? Compliant with leading methodologies, including Verra's VM0047 and WCC. The delivered assessment is customised to meet the required methodology.

Where can this assessment be applied? Best suited for tropical climates. Contact us for other regions.

How is pricing determined? Costs vary based on project size (hectarage). Get a tailored quote via Sherwood.

Does this work for other intervention types (IFM, REDD+)? Not currently, but we are expanding capabilities. Reach out for updates.

➔ Need More Information?

Contact us to discuss your project and how we can support your project assessment needs.



hello@treeconomy.co



[linkedin/treeconomyco](https://www.linkedin.com/company/treeconomyco)



www.treeconomy.co